

Figure 1b: ESKOM: Dealesville - Kimberley - Kathu

Olien to Manganore Substations

Topography Map: Scanned 1:250 000

ENGINEERING GEOLOGICAL SURVEY:

As shown on plan and described in report

Engineering Geological Investigation to determine the potential for the upgrading of Power lines from Dealesville to Kuruman, with Olien to Manganore Substation corridors.

REPORT NUMBER: GS201403KUM DATED: May 2014



Report by:

**GEOSSET cc**

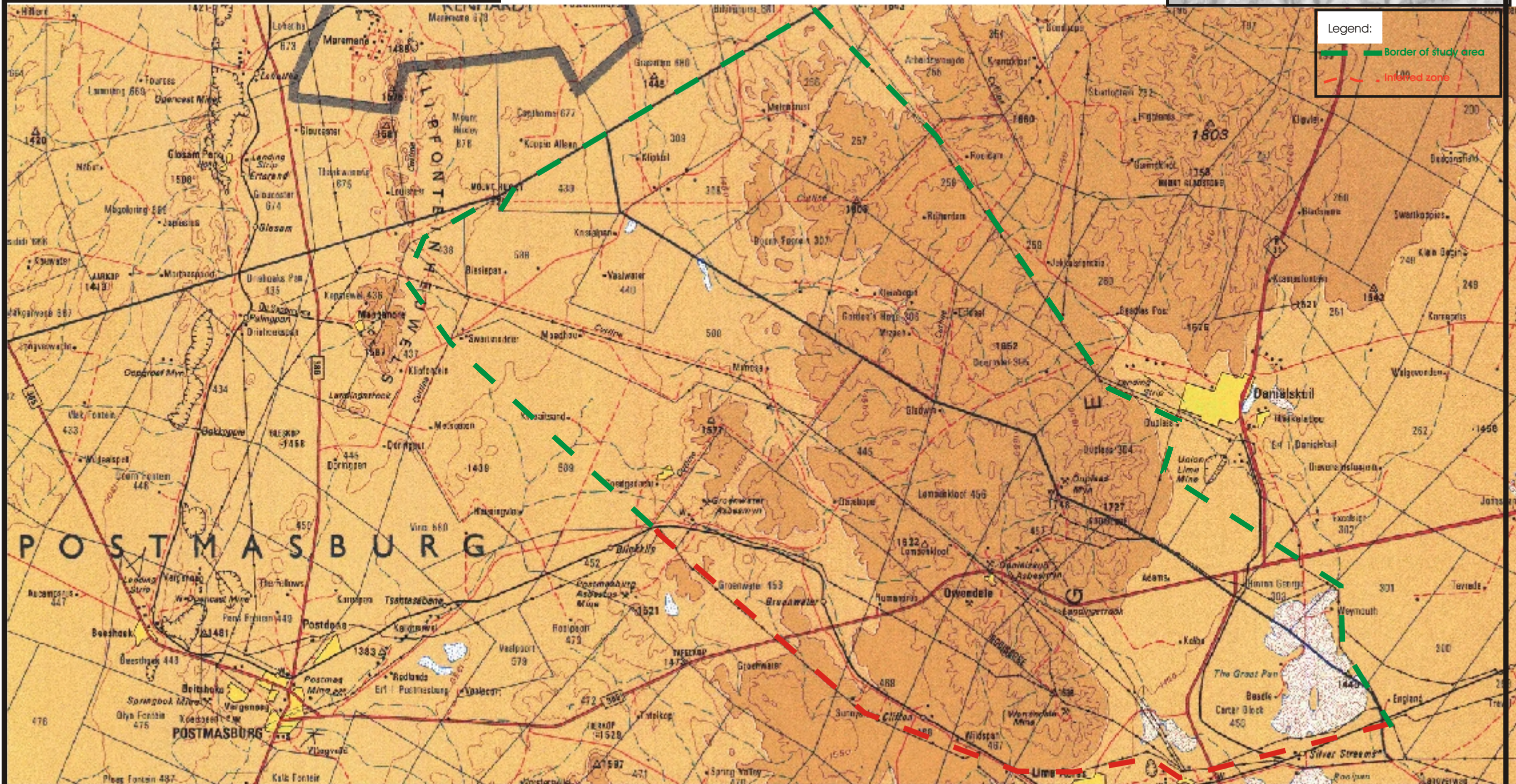
CK 99/65610/23  
RAADGEWENDE INGENIEURS- EN OMGEWINGSGEOLOE  
CONSULTING ENGINEERING AND ENVIRONMENTAL GEOLOGISTS

POSBUS/PO BOX 60995  
KAREN PARK 0118  
WEBFAX: 086 658 3190

TEL/FAX: (+2712)/(012) 525 1004  
CELL: (+2782)/(082) 925 4075  
e-mail: davidsvdm@webmail.co.za

Ingenieursgeoloog  
Engineering Geologist

**David S. van der Merwe**  
Bsc.(Hons.)(Eng. Geol.), Pr.Sci.Nat.; MSAIEG; MEESG



Legend:

- Border of study area
- Inferred zone